

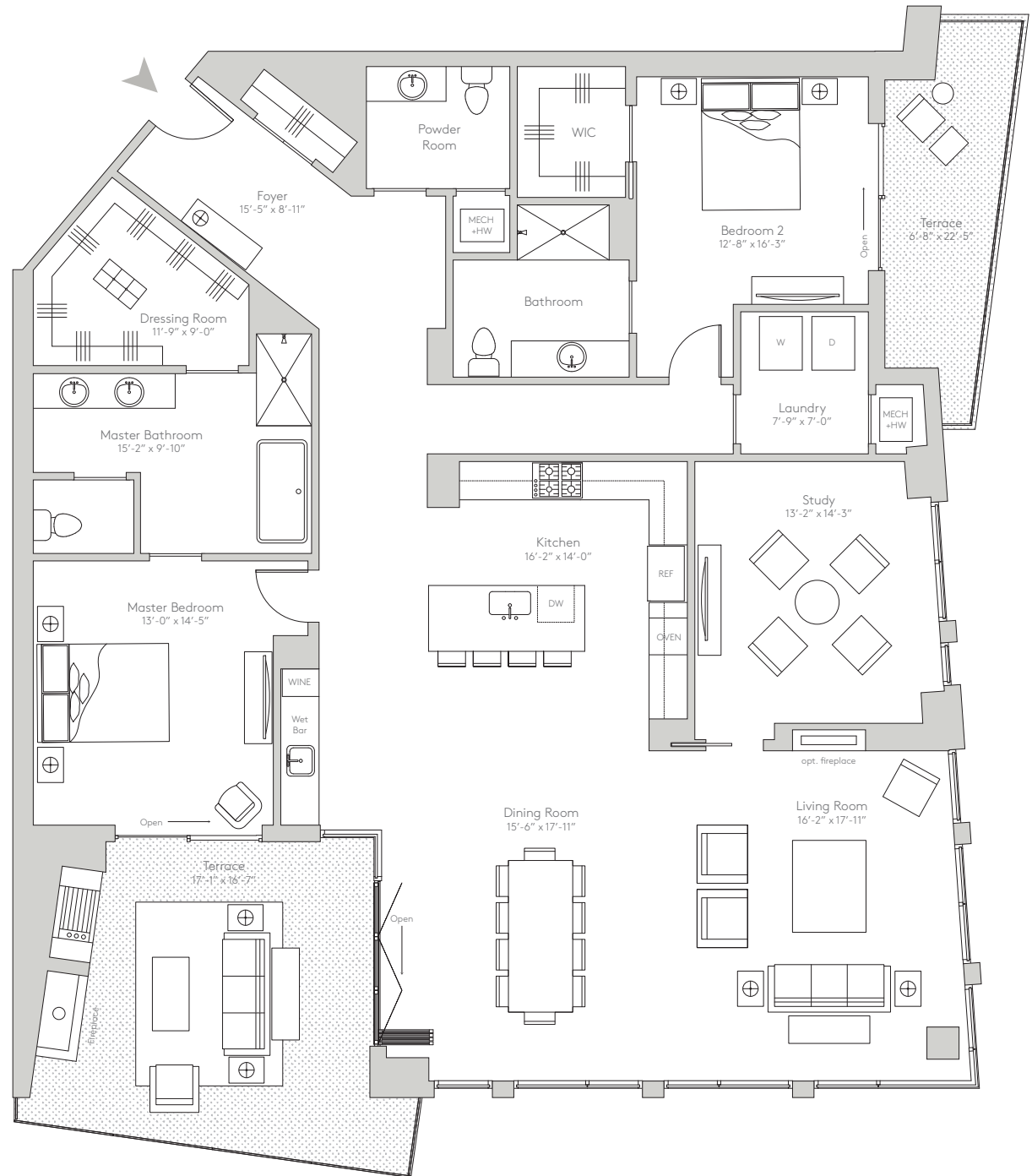
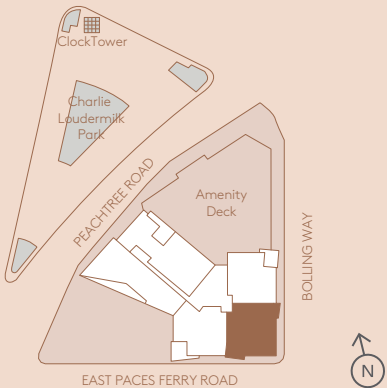
TWO BEDROOM RESIDENCE STYLE IV

TWO BEDROOMS
TWO BATHROOMS
POWDER ROOM
STUDY
TWO TERRACES

Interior
2,460 Square Feet

Exterior
448 Square Feet

- Gracious entry foyer
- Corner living room with NanaWall folding glass system and optional indoor fireplace
- Open kitchen with breakfast bar
- South facing terrace with Lynx built-in outdoor grill and outdoor gas fireplace
- Wet bar with built-in, full-height wine storage unit
- Master bedroom with dressing room and spacious bathroom with soaking tub
- Second bedroom with private east facing terrace



Any Person who is concerned about any representations regarding this floor plan should do his/her own investigation as to the dimensions, measurements and square footages. These plans are merely approximations and may not reflect the actual as-built conditions of the Condominium. Due to the nature of the construction process, there may be variations between the actual as-built conditions and these plans. Furthermore, the developer reserves the rights to revise these plans as it determines appropriate in its discretion.